



NET



## About ClearLED

ClearLED displays are trusted by leading brands around the globe to get you noticed. This unique display solution is sleek, lightweight, and modular. It offers second-to-none brightness, up to 93% transparency for daylight filtering, and creative versatility to meet every need—whether indoor, outdoor, flat, curved, or cylindrical—from window-size posters up to giant custom wall installations. ClearLED is designed to deliver high impact and unbeatable return on investment.

Contact us today to find out how to get noticed.

**TF** +1 800 497 0088  
**CAN** +1 778 373 5701  
info@clearled.com  
clearled.com

### USA OFFICE

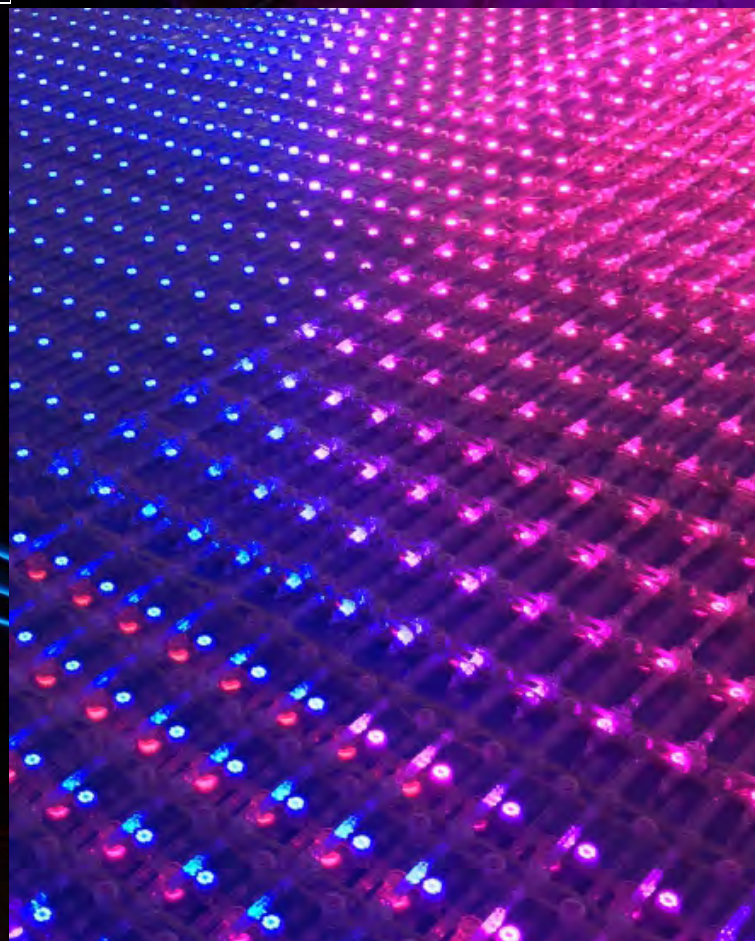
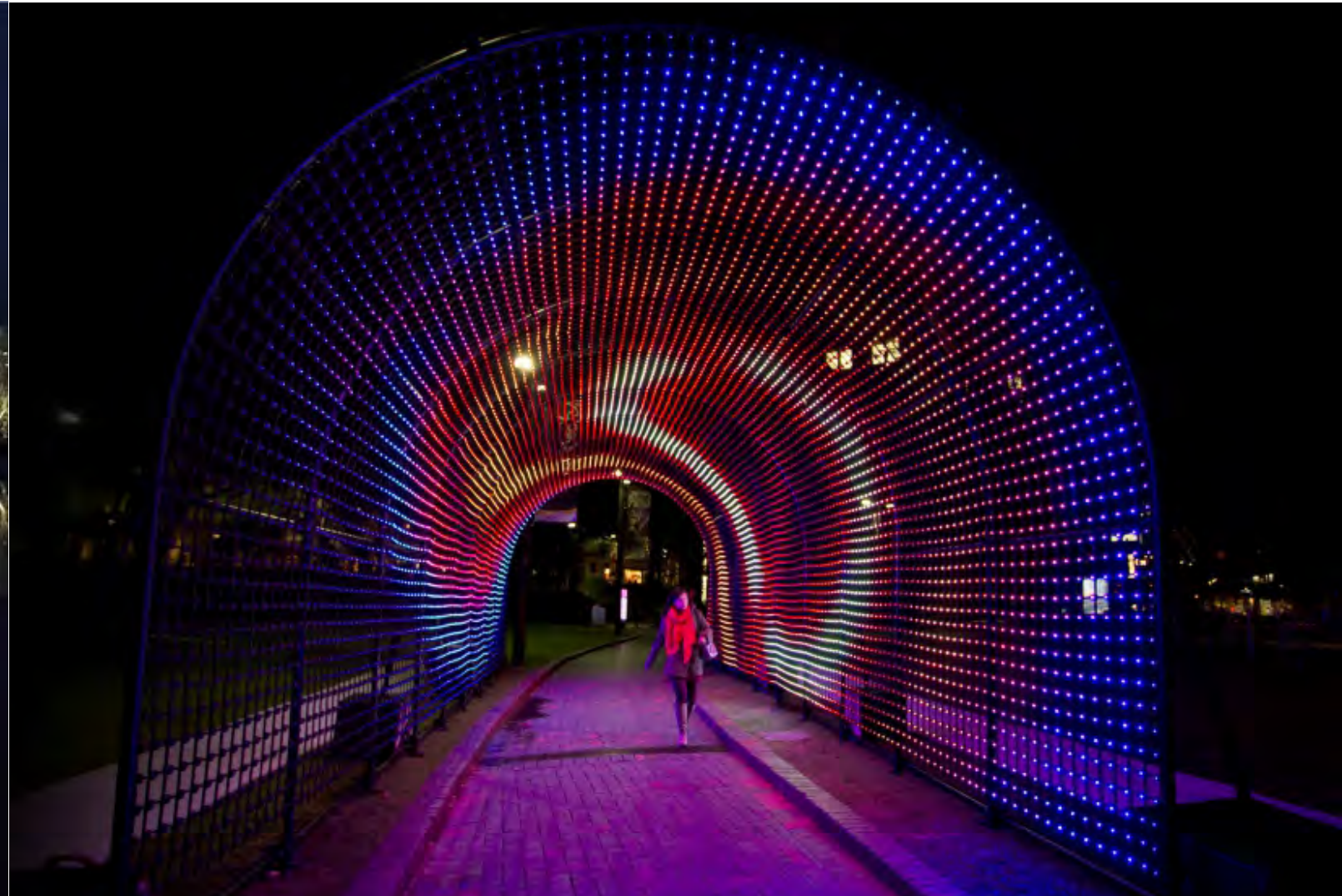
**OFFICE** +1 951 795 4446  
+1 949 793 5330  
1257 Simpson Way  
Escondido, CA 92029



GET NOTICED



GET NOTICED

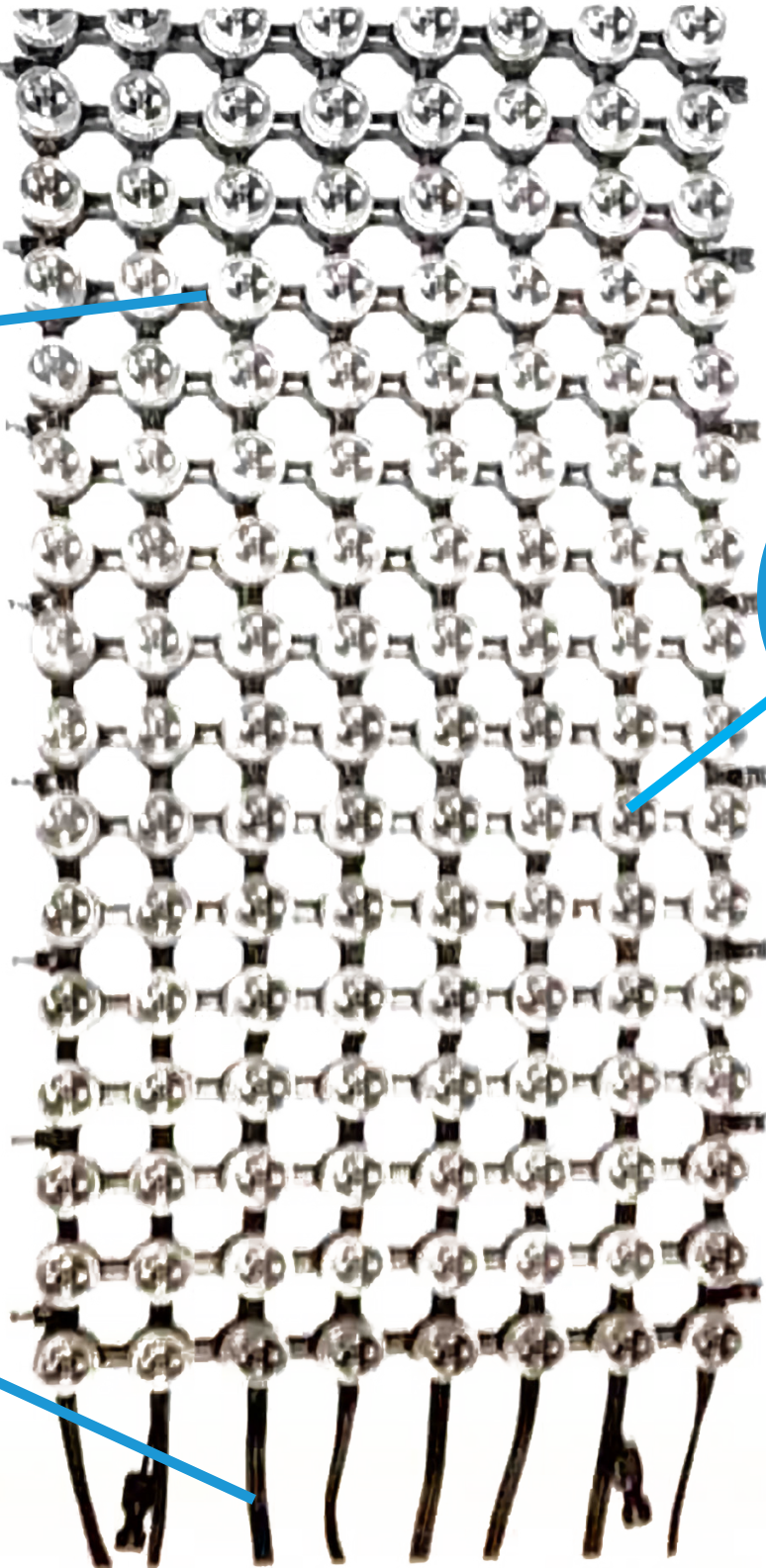


# See The Difference Transparency Makes

Traditional LED window displays act as a dark wall, so shoppers can't see in, and they block sunlight, so your indoor areas need to rely on unnatural lighting. ClearLED transparent LED window displays are virtually unnoticeable, from five meters and more away, and offer your indoor shopping space the best of both worlds: natural sunlight can filter through for a pleasant indoor shopping experience, while outdoors passers-by can see in.



Modular system



Available in  
black and white

## Reap the benefits of transparent ClearLED Net



### Easy to transport and storage

ClearLED Net displays not only offer unparalleled transparency. The ClearLED Net is lightweight and flexible like cloth, allowing it to be rolled and stored easily.



### Brighter than bright—see it from further away

With up to 6000nits in brightness, ClearLED Wall series displays are visible 24/7, even in bright daylight, and beat traditional signs, non-transparent LED displays, projectors, and LCD signs.



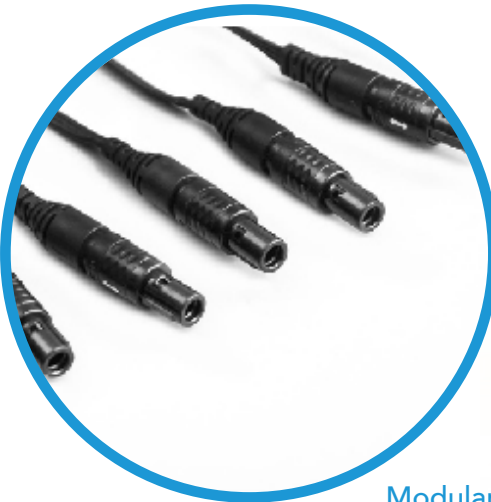
### Modular design—build the size you need

ClearLED Net displays come in standard size modules and can be used to create small, medium, large, and even extra-large LED screens—there are no size limitations.



### Lightweight and waterproof

Designed with efficiency and functionality in mind, ClearLED NET is constructed in light, transparent material, allowing them to be water-proof and remaining up to 85% transparency.



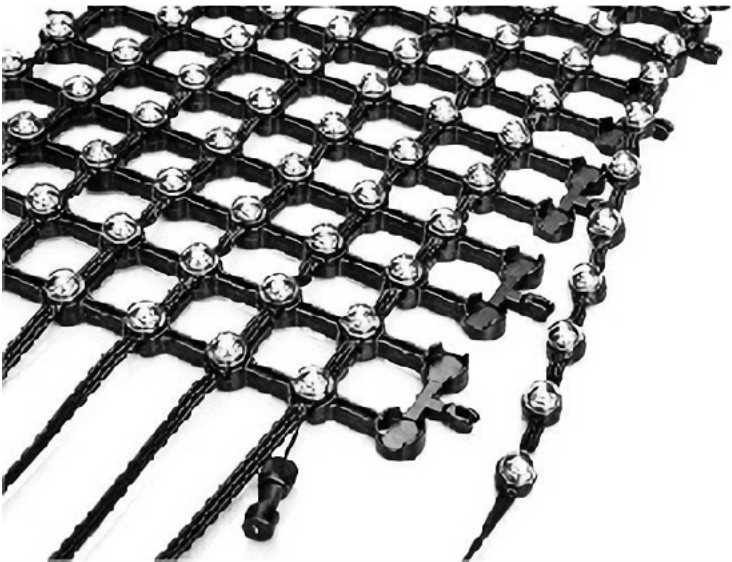
Modular system -  
Build in any size

Tech specs

NET 37					NET 56				
Model	NET37-P1	NET37-P4	NET37-P6	NET37-P8	Model	NET56-P1	NET56-P4	NET56-P6	NET56-P8
Module Size W x H	300mm x 4800mm 11.8" x 198.0"				Module Size W x H	450mm x 7200mm 17.7" x 283.5"			
Weight kgs/m²	5.8	10.5	10.5	10.5	Weight kgs/m²	7.8	5.5	5.5	5.5
Pixel Pitch (mm)	37.5mm				Pixel Pitch (mm)	56.25			
Brightness (nits)	1400	5000	5400	6600	Brightness (nits)	1000	2880	3960	5100
Transparency (%)	70	55	55	55	Transparency (%)	81	75	75	75
Module Resolution (pixel) W x H	8 x 128				Module Resolution (pixel) W x H	8 x 128			
Resolution (dot/m²)	711				Resolution (dot/m²)	316			
Ingress Protection	IP65				Ingress Protection	IP65			
Refresh Rate (Hz)	1000				Refresh Rate (Hz)	1000			
Viewing Angle (Horizontal / Vertical)	140° / 110°				Viewing Angle (Horizontal / Vertical)	140° / 110°			
Minimum Viewing Distance	46.9m 153.9'				Minimum Viewing Distance	70.3m 230.68'			
Life Time (hours)	>50,000				Life Time (hours)	>50,000			
Working Temperature Range	-20 to +40 °C -4 to 104 F				Working Temperature Range	-20 to +40 °C -4 to 104 F			
Color	Black, White				Color	Black, White			
System Configuration	YDEA				System Configuration	YDEA			
Power Source (V)	AC 100-250				Power Source (V)	AC 100-250			
Voltage Input (V)	7.5 DC	15 DC	15 DC	15 DC	Voltage Input (V)				
Average Power Consumption (watts/m²)	90	180	230	350	Average Power Consumption (watts/m²)	60	120	150	180
Maximum Power Consumption (watts/m²)	280	500	650	800	Maximum Power Consumption (watts/m²)	120	300	400	500

Tech specs

Model	NET 75		
	NET75-P4	NET75-P6	NET75-P8
Module Size W x H	600mm x 9600mm 23.6" x 378.0"		
Weight kgs/m²	3.75	3.5	3.5
Pixel Pitch (mm)	75		
Brightness (nits)	1560	2400	3600
Transparency (%)	85	85	85
Module Resolution (pixel) W x H	8 x 128		
Resolution (dot/m²)	178		
Ingress Protection	IP65		
Refresh Rate (Hz)	1000		
Viewing Angle (Horizontal / Vertical)	140° / 110°		
Minimum Viewing Distance	93.8m 307.6'		
Life Time (hours)	>50,000		
Working Temperature Range	-20 to +40 °C -4 to 104 F		
Color	Black, White		
System Configuration	YDEA		
Power Source (V)	AC 100-250		
Voltage Input (V)	15 DC	15 DC	15 DC
Average Power Consumption (watts/m²)	70	90	120
Maximum Power Consumption (watts/m²)	150	250	350



Modular System

ClearLED NET requires minimal maintenance. LED strips have a long-life expectancy and can be replaced quickly and easily when needed without having to replace the entire module.

Simple Setup and installation

ClearLED NET installations may require support from one of our trusted dealer technicians—but either way our modular panels snap together easily without the need of complicated tools. Easy and fast to install, displays can be hung or mounted. You'll find that setup time is amazingly quick.

